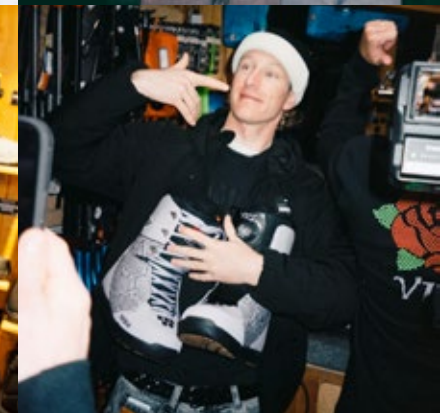
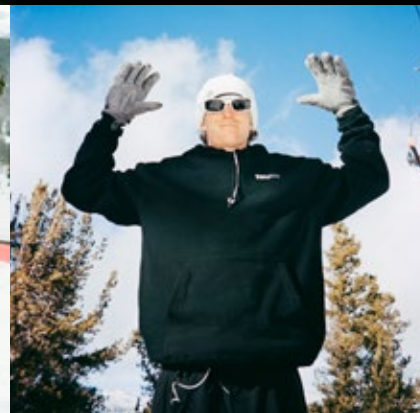
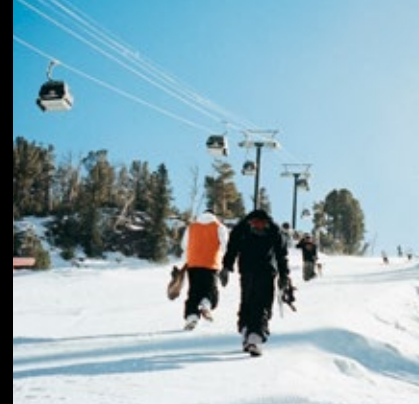


thirtytwo



QUICK-2024  
STRIKES



# LASHED X BOOT VIZZ

Favorite boot for Vizz, the Lashed offers a Performance Rubber Outsole with Evolution Foam Cushioning. With the same reliable fit, medium flex, and support.

## FEATURES

- + I:I Lacing
- + Performance Rubber Outsole
- + Evolution Foam Cushioning
- + 3D Molded Tongue
- + Team Internal Harness
- + Tongue Tension+
- + Articulated Cuff
- + Independent Eystay
- + Performance Backstay
- + Heel Hold Kit

Code\_ 8105000554

Size\_  
US 5-14  
EU 37-48  
UK 4-13

Flex\_  
6/10

Fit\_  
Team



Lavender\_534

# LASHED DOUBLE BOA BOOT X VIZZ X VIZZ

A team favorite, the Lashed offers a Performance Rubber Outsole with Evolution Foam Cushioning. Get the same reliable fit, medium flex, and support you've come to expect from the Lashed with the added benefit of the Dual BOA Fit System featuring TX3 lace.

## FEATURES

- + I:I Lacing
- + Dual-Zone BOA® Fit System with H4 Coiler™
- + Performance Rubber Outsole
- + Evolution Foam Cushioning
- + 3D Molded Tongue
- + Team Internal Harness
- + Articulated Cuff
- + Independent Eyestay
- + Performance Backstay
- + Heel Hold Kit

Code\_8105000554

Size\_  
US 5-14  
EU 37-48  
UK 4-13

Flex\_  
6/10

Fit\_  
Team



Lavender\_534



# VIZZ HOODIE

FLEECE

80% Cotton 20% Polyester, 10 oz. fleece, Underarm gusset, DTM hood drawstring, Neck twill taping, Rib at sleeve cuff and bottom opening Pouch pocket, Light touch plastisol ink

Code\_ 8130001251

Size\_ S. M. L. XL. XXL



Black\_001

Back View

# VIZZ CREW

FLEECE

80% Cotton 20% Polyester. 10 oz. fleece. Underarm gusset. Neck twill taping. Rib at sleeve cuff and bottom opening. Etnies woven clamp label. Printed logo

Code\_ 8130001252

Size\_ S, M, L, XL, XXL



Black\_001

Back View

# VIZZ S/S

TEE

18 singles. 100% Cotton. Carded open-end jersey. 203 grams. 6 ounces. Set in collar / 11/8" rib height. Taped shoulder to shoulder. Woven clamp label. Light touch plastisol ink

Code\_ 8130001253

Size\_ S, M, L, XL, XXL



Black\_001

Back View



# LASHED BOOT

A team favorite, the Lashed offers a Performance Rubber Outsole with Evolution Foam Cushioning. With the same reliable fit, medium flex, and support.

## FEATURES

- + I:I Lacing
- + Performance Rubber Outsole
- + Evolution Foam Cushioning
- + 3D Molded Tongue
- + Team Internal Harness
- + Articulated Cuff
- + Independent Eyestay
- + Performance Backstay
- + Calf Relief

Powell\_ 8105000535

Size\_  
US 5-14  
EU 37-48  
UK 4-13

Flex\_  
6/10

Fit\_  
Team



White / Blue\_155



White / Green\_167

# LASHED DOUBLE BOA

Step into the future of snowboarding, the #1 snowboard boot teamed up with one of the best snowboarders worldwide, Zeb Powell and his signature Lashed. Get with the same reliable fit, medium flex, and support you've come to expect from the Lashed with the added benefit of the Dual BOA Fit System featuring TX3 lace, approved and ridden by Zeb Powell.

## FEATURES

- + I:1 Lasting
- + Dual-Zone BOA® Fit System with H4 Coiler™
- + Performance Rubber Outsole
- + Evolution Foam Cushioning
- + 3D Molded Tongue
- + Team Internal Harness
- + Articulated Cuff
- + Independent Eyestay
- + Performance Backstay
- + Heel Hold Kit

Powell\_8105000533

Size\_  
US 5-14  
EU 37-48  
UK 4-13

Flex\_  
6/10

Fit\_  
Team



White / Blue\_155



White / Green\_167



**ZEB**  
HOODIE

80% Cotton 20% Polyester. 10 oz. fleece. Underarm gusset. DTM hood drawstring. Neck twill taping. Rib at sleeve cuff and bottom opening Pouch pocket. Light touch plastisol ink

Code\_B130001256

Size\_S, M, L, XL, XXL



Black / Blue\_587

Back View



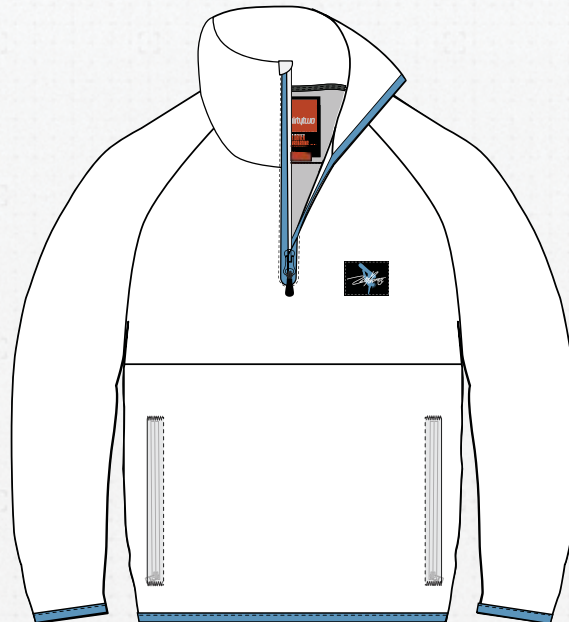
White\_100

**ZEB**  
FLEECE  
**ANORAK**

220 GSM Micro Polar Fleece. 32 REPEL. Reverse Coil Zippers. Garment Washed for soft hand feel. Side Zip Pockets with internal pouch. Woven Chest Label - should also have the REPEL icon

Code\_B130001257

Size\_S, M, L, XL, XXL



White\_100

# ZEB JERSEY

LONG SLEEVE

100% Polyester Dry Mesh. Woven damask label. Light touch plastisol ink

Code\_ 8130001258

Size\_ S, M, L, XL, XXL



Black/Blue\_587

Back View



Black/Green\_985

Back View

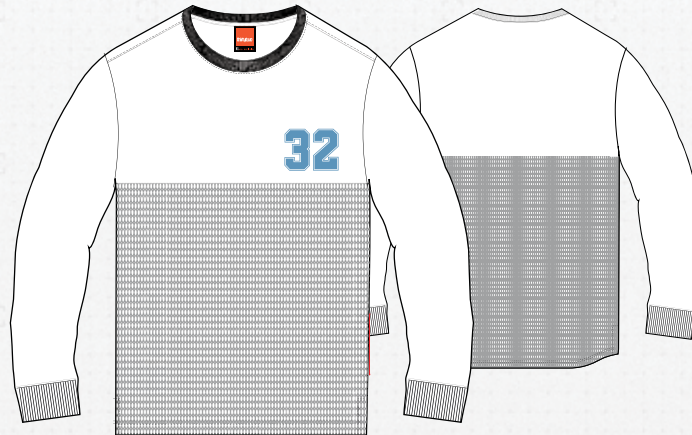
# ZEB TECH

LONG SLEEVE

100% Wicking and Antimicrobial Polyester. Custom Mesh Jacquard. Relaxed Fit. Screenprint Graphic. Damask Woven Back Logo

Code\_ 8130001259

Size\_ S, M, L, XL, XXL



White\_100

Back View



# TM-2 BOOT DOUBLE BOA BOMBHOLE

Scotty Stevens chooses the TM-2 because it's the most versatile boot in the line. With a medium flex it's suitable for any riding style. A perfect fit right out of the box, the TM-2 is both focused on comfort with ultra soft Energy Foam cushioning and durability with protective Overmold. Dial in the fit with the Dual BOA Fit System featuring TX3 lace.

## FEATURES

- + I:1 Lasting
- + Dual BOA Fit System
- + Michelin Fiberlite Outsole
- + Energy Foam Cushioning
- + Overmold
- + 3D Molded Tongue
- + Performance Internal Harness
- + Articulated Cuff
- + Performance Backstay
- + Heel Hold Kit
- + Calf Relief

Stevens\_ 8107000133

Size\_  
US 5-14  
EU 37-48  
UK 4-13

Flex\_  
7/10

Fit\_  
Performance



Black / Blue / White\_589

# TM-2 BOOTS BOMBHOLE

The TM-2 is a team favorite because it's the most versatile boot in the line. With a medium flex it's suitable for any riding style. A perfect fit right out of the box, the TM-2 is both focused on comfort with ultra soft Energy Foam cushioning and durability with protective Overmold.

## FEATURES

- + I:1 Lasting
- + Michelin Fiberlite Outsole
- + Energy Foam Cushioning
- + Overmold
- + 3D Molded Tongue
- + Performance Internal Harness
- + Tongue Tension+
- + Articulated Cuff
- + Performance Backstay
- + Heel Hold Kit
- + Calf Relief

Stevens\_8107000132

Size\_  
US 5-14  
EU 37-48  
UK 4-13

Flex\_  
7/10

Fit\_  
Performance



Black / Blue / White\_589

# BOMBHOLE

CREW

80% Cotton 20% Polyester. 10 oz. fleece. Underarm gusset. Neck twill taping. Rib at sleeve cuff and bottom opening. Etnies woven clamp label. Printed logo

Code\_ 8130001254

Size\_ S, M, L, XL, XXL



Black\_001

Back View

# BOMBHOLE

JOBBER

50% Cotton 50% Polyester. 8 oz. fleece. Classic Fit for loose comfort. Seamless sides. Side Pockets. Covered elastic waistband. Elasticized cuffs

Code\_ 8130001255

Size\_ S, M, L, XL, XXL



Black\_001

# BOMBHOLE

BEANIE

100% Soft Acrylic. Fine Ribbed Knit. Extended Fit. Patch logo

Code\_ 814000784

Size\_ One Size



Black / Charcoal\_ 553



26921 Fuerte Drive, Lake Forest, CA 92630

Copyright © 2020 Sole Technology, INC.  
All Rights Reserved.

---

[thirtytwo.com](http://thirtytwo.com)